



PSSL-BR-SL-01-G2

LED Solar Street Light



IP66

Lens :IK10

Solar Panel:IK08

50W/90W/120W/240W

190
lm/W

株式会社ペンタクト

住所: 〒270-0023 千葉県松戸市八ヶ崎2-2-5

電話番号: 047-710-5351 FAX番号: 047-340-1101

E-Mail: pentact@pentact.co.jp URL: <https://www.pentact.co.jp>





PSSL-BR-SL-01-G2

LED Solar Street Light



CCT: 3000K/4000K/5000K/5700K

Beam Angle: Type II-S(140°85°)

Solar Options



50W

90W

120W

Street light single pole



50W

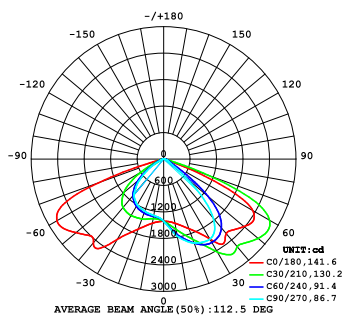
90W

120W

240W

Street light Arm pole

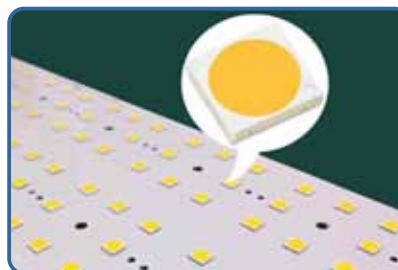
Photometry



Type II-S(140°85°)



LED TYPE



IP66 Water-proof



Easy Installation





PSSL-BR-SL-01-G2

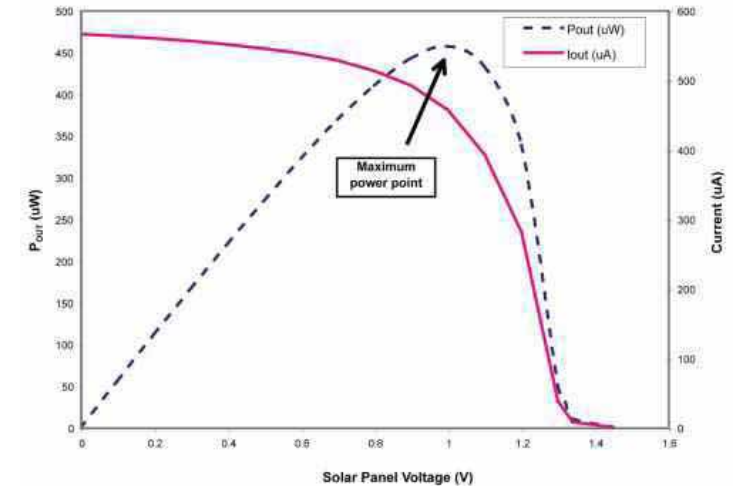
LED Solar Street Light



MPPT stands for “ Maximum Power Point Tracking ” and is an advanced and efficient charging method . MPPT technology can detect the power generation of solar panels real time and track the highest voltage and current value(U-I curve), so that the system can charge the battery with the highest efficiency. Compared with traditional PWM controllers.MPPT controllers can maximize the effectiveness of solar panels and provide greater charging current . Generally speaking , MPPT can improve energy efficiency by 15%-20% compared to PWM controllers.

Specifications

Item	PSSL-BR-SL50W-01-G2	PSSL-BR-SL90W-01-G2	PSSL-BR-SL120W-01-G2	PSSL-BR-SL240W-01-G2
Solar Panel	50W/18V	90W/18V	120W/18V	120W/18V*2
Solar Cell	High Efficiency Monocrystalline Silicon			
Lithium Battery	18AH/12.8V	30AH/12.8V	48AH/12.8V	42AH/25.6V
Luminous Efficacy	190Lm/W			
Lamp Power	30W	50W	80W	120W
Led	SMD 5050			
CRI	>70			
Lens	Type II-S(140°85°)			
Lighting time	5-7 Rainy day(full charged)			
Weight	12kg(26.5lbs)	17kg(37.5lbs)	24kg(52.9lbs)	40kg(88.2lbs)
Pole top diameter	Ø50-62mm			
Mounting height	5~15m			
Installation space	10~30m			





PSSL-BR-SL-01-G2

LED Solar Street Light



Housing Material

High strength and high quality ADC12 die casting aluminum body. Die casting aluminum housing with reliable powder coating for harsh outdoor environments. Dustproof, waterproof.

Dia: 64mm (2.52")
Suit for 50~62mm (1.97~2.45")

Self-clean

Smooth body would greatly diminish dust accumulation and bird droppings heap up.

Solar Material

High Efficiency
Monocrystalline Silicon

Sleep switch

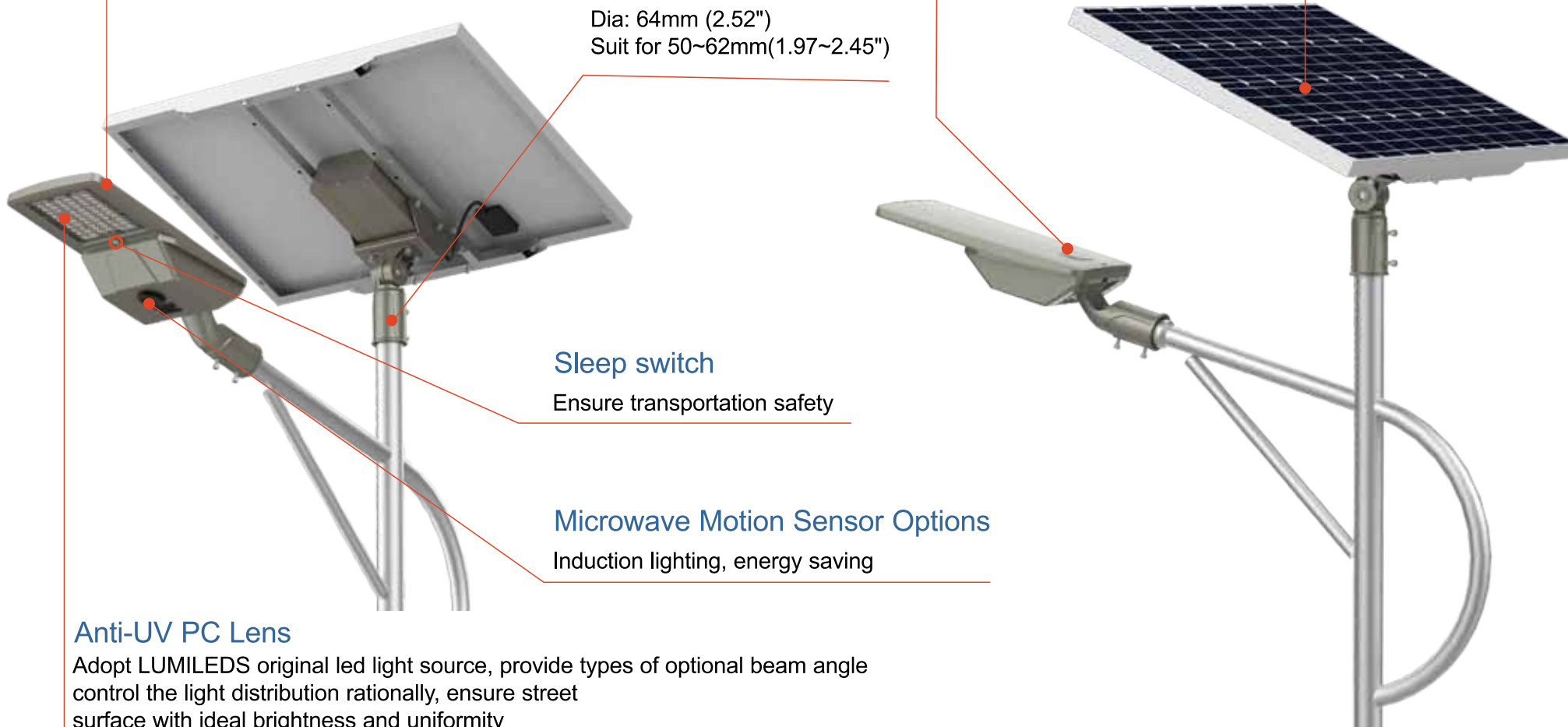
Ensure transportation safety

Microwave Motion Sensor Options

Induction lighting, energy saving

Anti-UV PC Lens

Adopt LUMILEDS original led light source, provide types of optional beam angle control the light distribution rationally, ensure street surface with ideal brightness and uniformity





PSSL-BR-SL-01-G2

LED Solar Street Light



Lithium battery

PLC(Programmable controller)

Self clean glossy Surface

IP66 water-proof

Cooling heatsink

High Brightness LED

Anti-UV PC Lens

High efficiency Solar panels

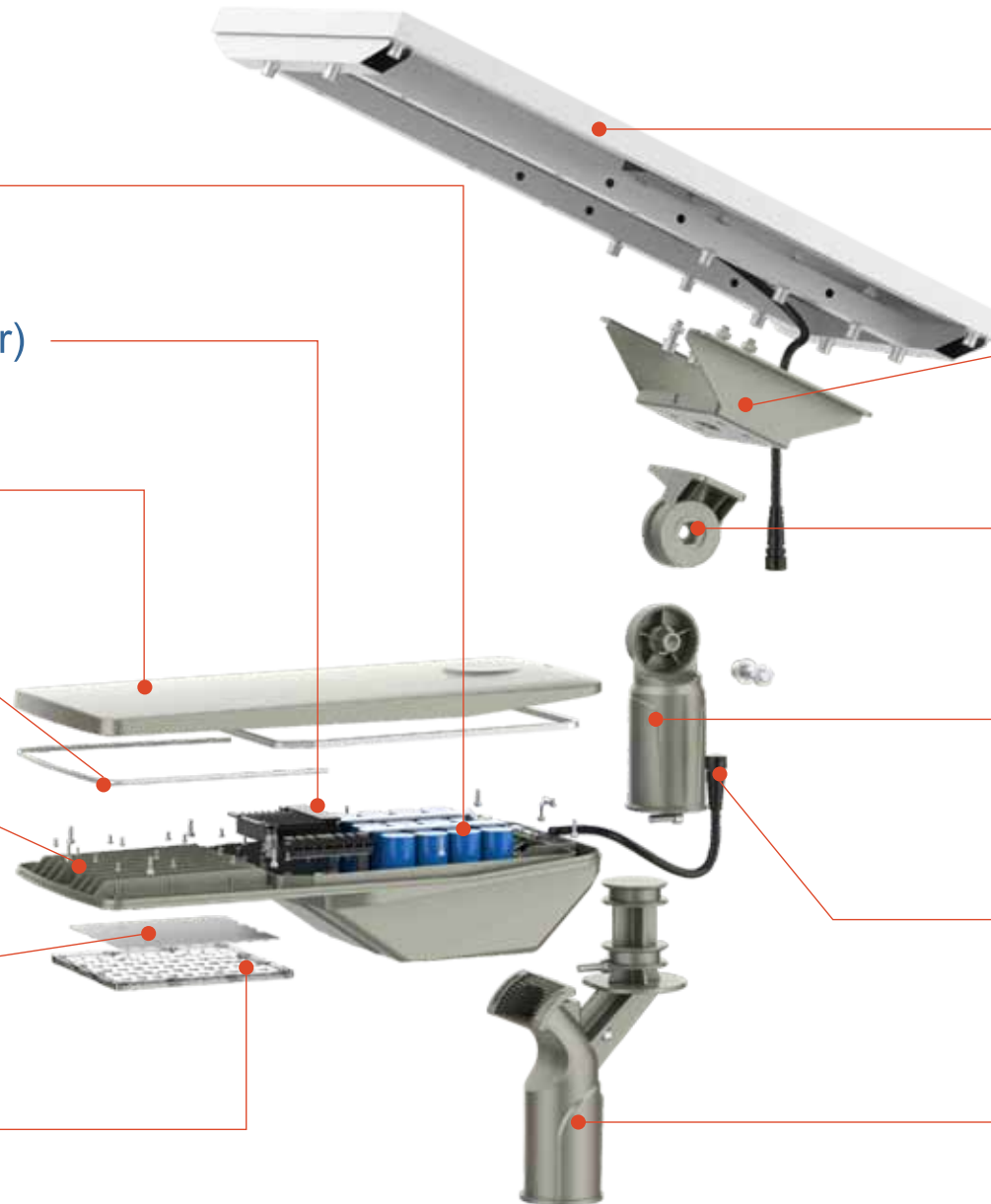
Solar U Bracket

Rotatable Arm

Solar base

IP66 Waterproof connector

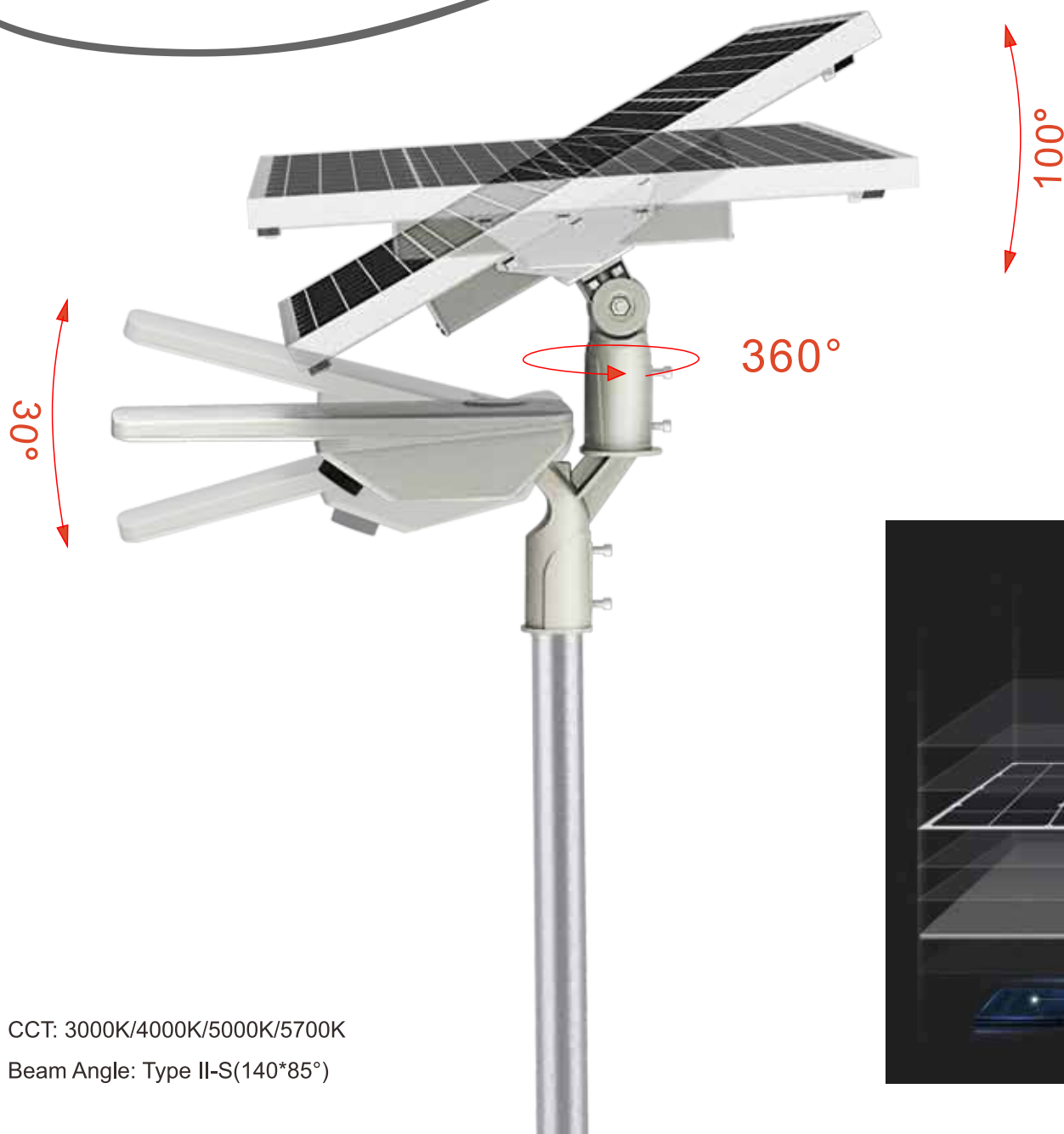
Street light socket





PSSL-BR-SL-01-G2

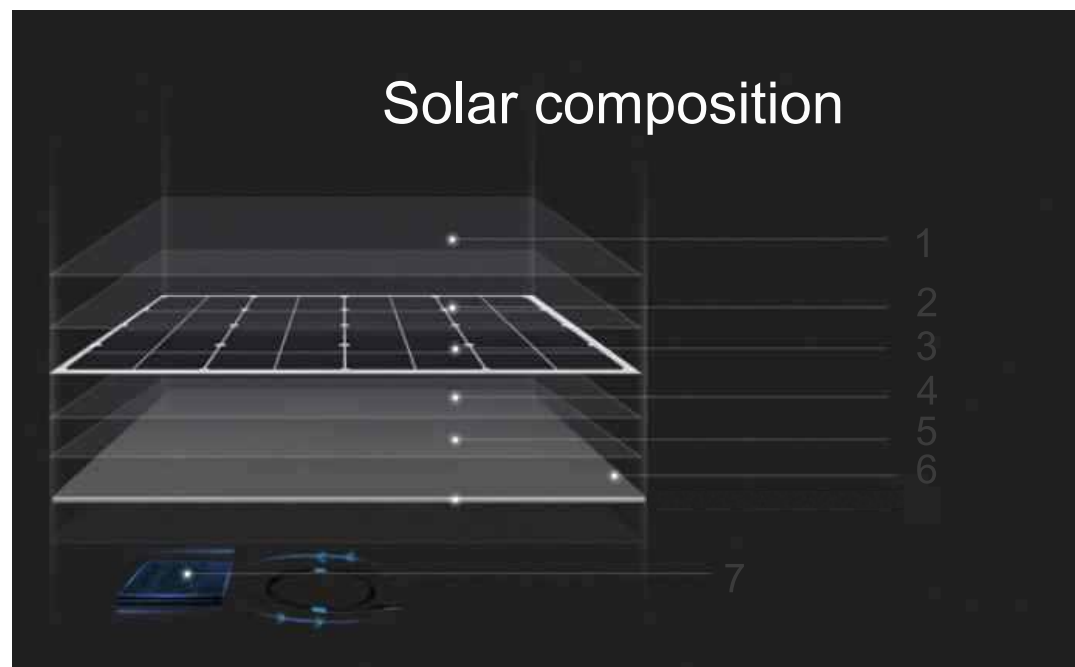
LED Solar Street Light



Solar composition

- 1、 Ultra-white Tempered Glass
- 2、 EVA Film
- 3、 Solar Power Chip
- 4、 EVA Film
- 5、 PET/TPT Dorsal Membrane
- 6、 Aluminum Alloy Frame
- 7、 Terminal block

Solar composition



CCT: 3000K/4000K/5000K/5700K

Beam Angle: Type II-S(140°85°)

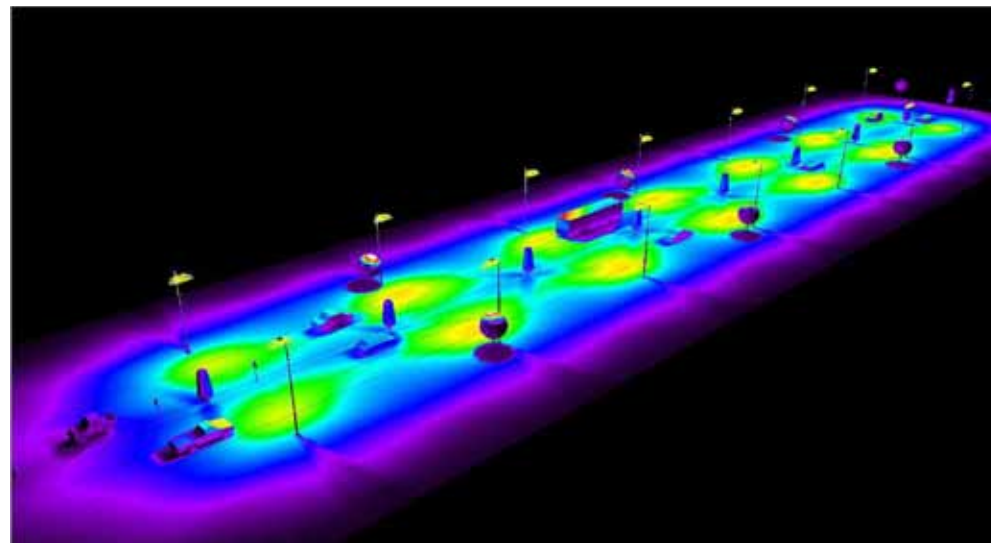
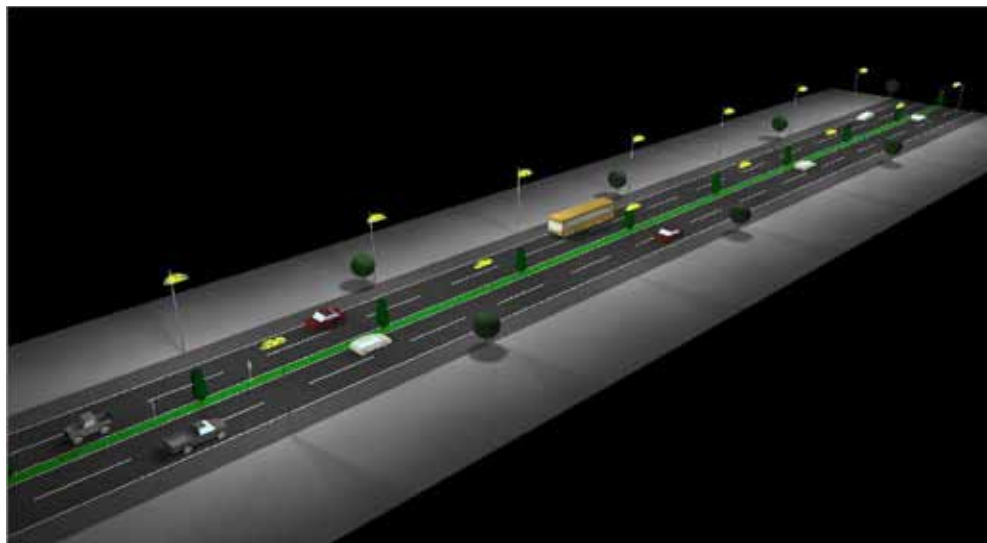


PSSL-BR-SL-01-G2

LED Solar Street Light



Street light simulation



Load Test



* Test Standard: IEC/EN 60598-1-4.14.1 GB7000.1-2016-4.14.1

* Test Facility: Test Installation Iron Frame

* Test Condition:

A constant, evenly distributed load equal to four times the weight of the luminaire shall be added to the luminaire in the normal direction of the load for a period of 1 h.

* **Summary: Pass**

There is no appreciable deformation of the components of the suspension system at the end of this period.

The system is able to withstand 120kg pressure MAX (wind speed: 127 mile/h, 205 km/h, 57 m/s)

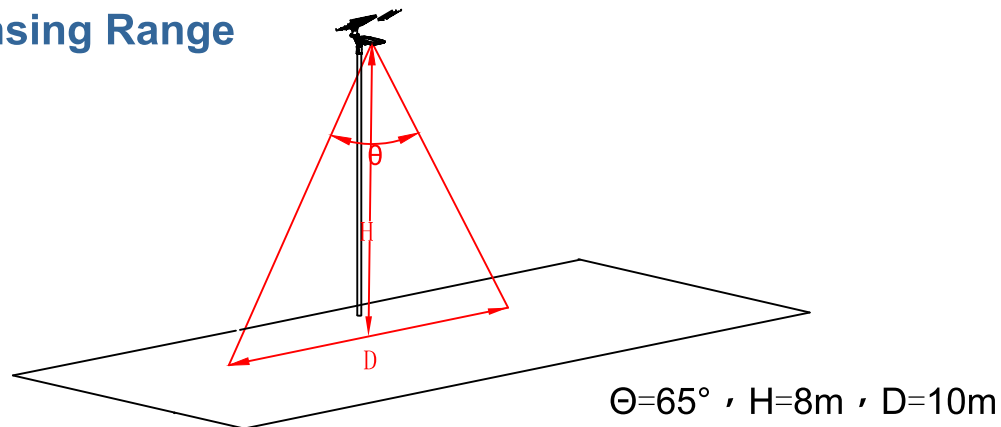


PSSL-BR-SL-01-G2

LED Solar Street Light



Sensing Range



Sensing



Sensing Lighting Modes Options

Option 1 : At night,

Light on 100% if motion detected , Stand-by period 60 seconds , Light on 10% if no motion detected.

For example, when the led solar street light turn-on at 6:00 pm, 6:00 pm - dawn (Light on 100% if motion detected , Stand-by period 60 seconds , Light on 10% if no motion detected).

Remarks:

The street lights' turn-on time depends on the clients' local time(Turn-on Light Level: <20lux).

Customized modes available.

Ordinary Lighting Modes Options

Option 1 : At night,

T1 : 100%-2hr T2 : 60 % -2hr T3 : 10 % -7hr T4 : 50%-1hr

For example , when the led solar panel street light tum-on at 6 : 00,

T1:pm100 % -2hr on 6 : 00pm-8 : 00pm,

T2 : 60 % 0-2hr on 8 : 00pm-10 : 00pm,

T3 : 10 % -7hr on 10 : 00pm-5 : 00am,

T4 : 50 % 0-1hr on 5 : 00am-6 : 00am.

Remarks :

The street lights' turn-on time depends on the clients'local time
(turn-on Light Level : < 20lux).

Customized modes available

Remote Control Options



5-8m

The remote control can save three lighting modes, customized modes A/B/C available.

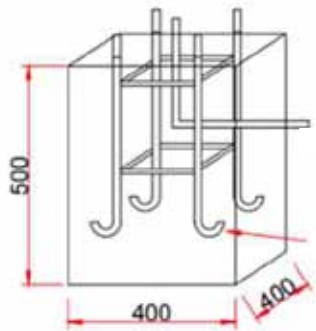


PSSL-BR-SL-01-G2

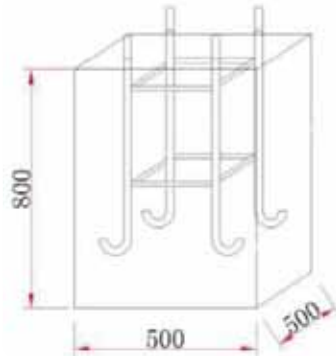
LED Solar Street Light



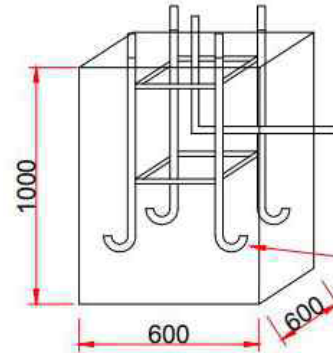
Installation base: Concrete base



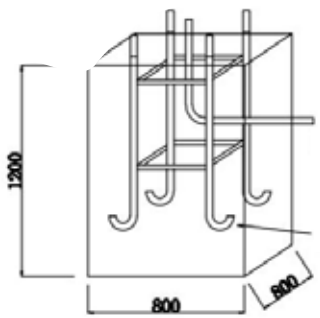
4m high pole



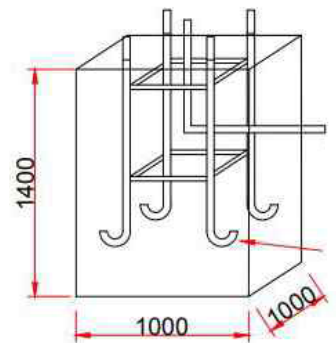
6m high pole



8m high pole



10m high pole



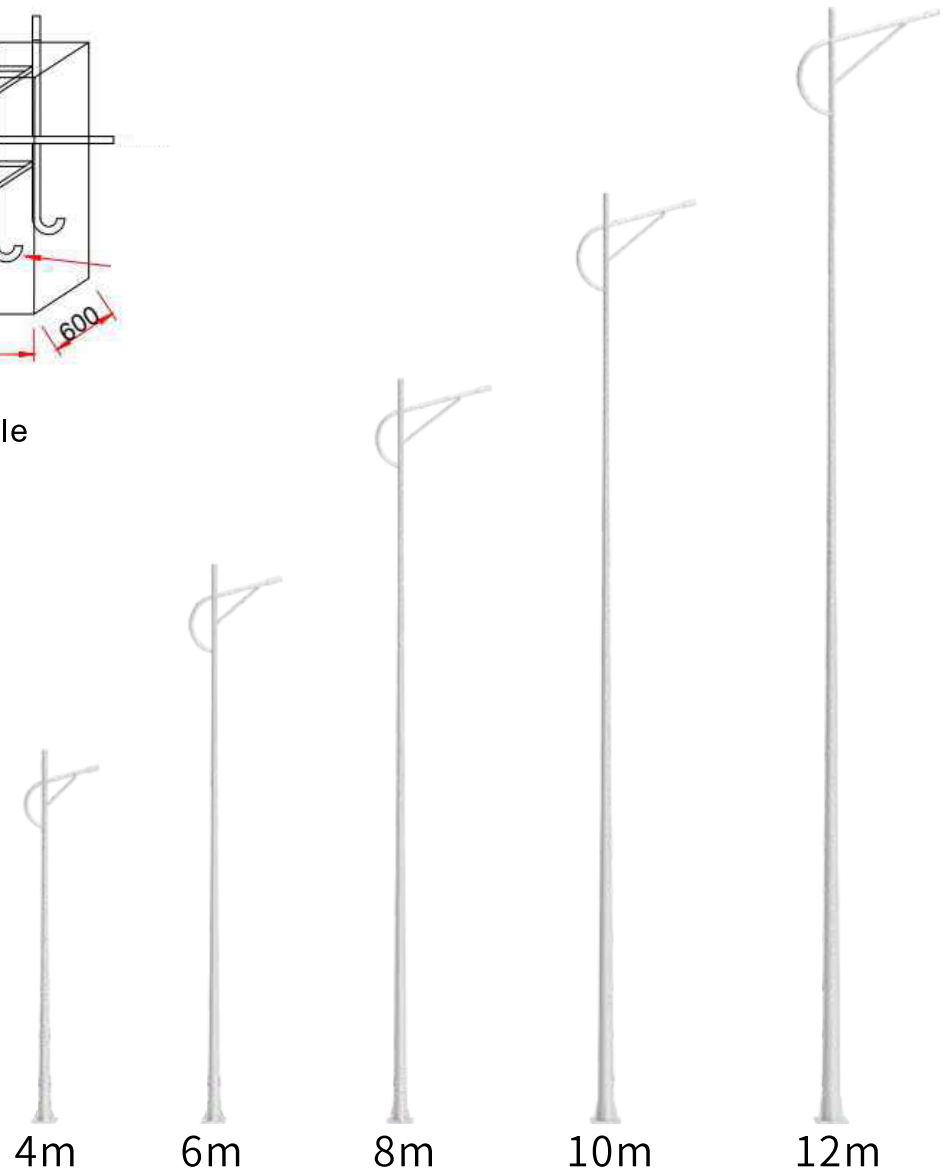
12m high pole

Installation Notes:

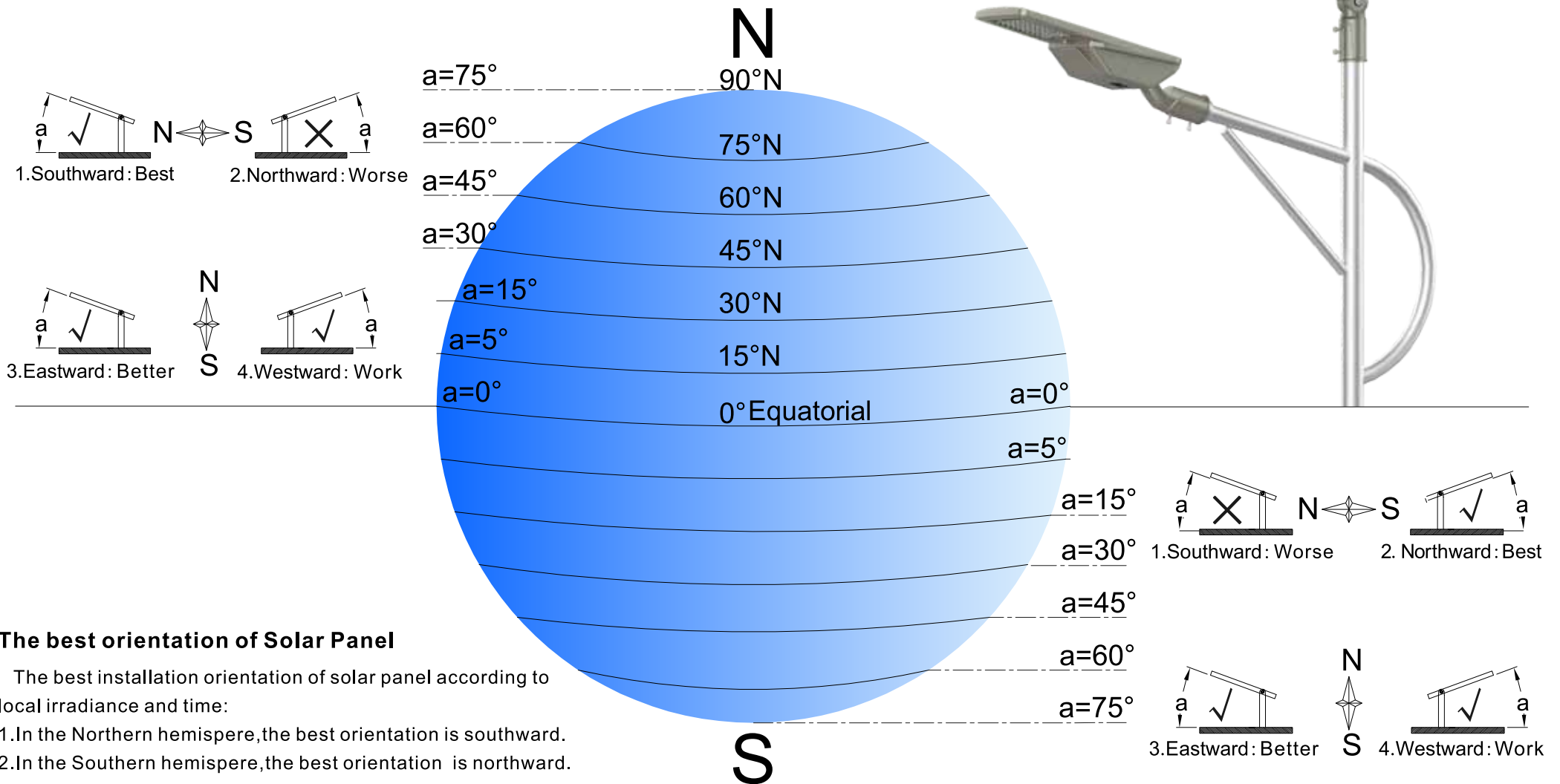
- 1.Foundation size as shown;
- 2.Put it into the ground cage, add concrete, and the solidification safety period is 15 days;
- 3.The anchor bolts should be vertical to the ground.

Remarks:

This foundation drawing is designed with the bottom and wall of the pit as hard and solid soil.
If the installation site is soft soil, geological exploration must be carried out. Then, according to the allowable bearing capacity of the soil, whether the foundation needs to be deepened or enlarged can be determined.



Solar Panel Angle





**PSSL-BR-SL
-01-G2**

Application

LED Solar Street Light

Pathway, Parking lot, Garden, Schools, Residential area, Villas, Resorts, Factories, Landscape,
Architectural decorative lighting, Village roads and other places.

